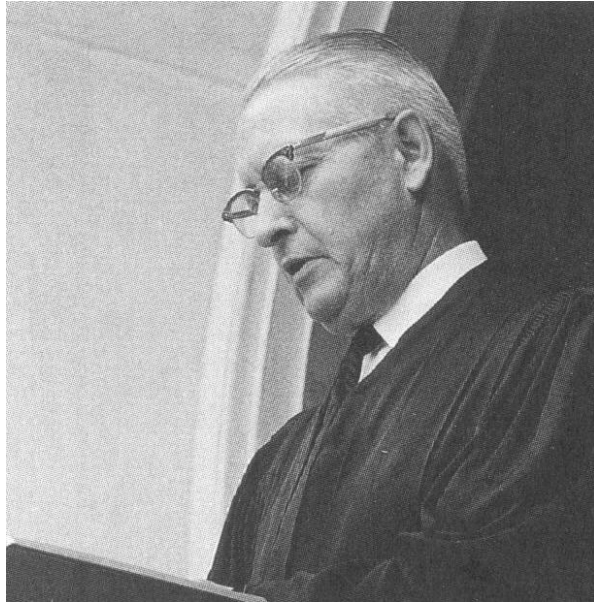


The Oscar J. Naumann Papers

An Inventory



Archive of the Wisconsin Evangelical Lutheran Synod
Mequon, Wisconsin

Inventory Prepared by Joshua J. Becker, Jeremiah J. Gumm, Tom Park,
Benjamin A. Radtke, Jeremy A. Schulz and Peter D. Sternberg

Description Prepared by Jeremiah J. Gumm and Benjamin A. Radtke
November 2004

The Oscar J. Naumann Papers

Table of Contents

Collection Level Description

Title	3
Dates	3
Extent	3
Biographical Sketch	3-4
Custodial History	4
Scope and Content	4-5
Source of Supplied Title	5
Arrangement	5
Restrictions	5
Accruals	6

Series Level Description

Series 1: Case files of pastors, laypeople and congregations.....	6
Series 2: Church of the Lutheran Confession documents	6
Series 3: Federation for Authentic Lutheranism documents.....	6
Series 4: General correspondence	6-7
Series 5: Correspondence and documents on inter-church relations	7
Series 6: Domestic and foreign Lutheran church bodies	7
Series 7: Lutheran Church-Missouri Synod documents	7-8
Series 8: Documents on Lutheran organizations	8
Series 9: Newspaper clippings	8
Series 10: Documents on non-Lutheran organizations	8
Series 11: Correspondence and documents on parish events.....	8
Series 12: Preaching invitations.....	8
Series 13: Specific correspondence	8-9
Series 14: Correspondence and documents on synodical affairs	9
Series 15: Synodical Conference documents	9
Series 16: Correspondence and documents on topical issues	9

Appendix A: The Oscar J. Naumann Papers File Arrangement List	10-11
---	-------

Collection Level Description

Title: The Oscar J. Naumann Files

Dates: 1945-1979

Extent: 3.8 meters of textual records

Biographical sketch:

Oscar John Naumann was born 24 June 1909 at Wood Lake, Minnesota, the son of Pastor Justus Naumann, a president of the Minnesota Synod from 1912-1917, and his wife Maria, nee Scherf. On 27 June, Oscar entered God's family through the Sacrament of Holy Baptism. He spent much of his childhood in Wood Lake, Goodhue and St. Paul, MN. At the age of 7 ½, he lost his father to a fatal paralytic stroke.

In March 1923, Pastor John Plocher confirmed Naumann at St. John's Lutheran Church in St. Paul, MN. After grade school, Naumann attended the High School Department of Dr. Martin Luther College in New Ulm, MN and graduated in 1927. He attended Northwestern College in Watertown, WI and received his BA in 1931. From there he attended and graduated from the Lutheran Theological Seminary in Thiensville, WI in 1934.

In 1934, after Seminary graduation, Naumann was assigned as a tutor at Northwestern College. On 13 September 1936, Naumann was ordained and installed as pastor of Arlington Avenue Lutheran Church in Toledo, OH. He served there until 1940. From 1940 to July 1946, he served as a professor at Dr. Martin Luther College. In 1944, while at DMLC, he helped organize Grace Lutheran Church in Le Sueur, MN. In July 1946, Naumann was installed as pastor of St. John's Lutheran Church in St. Paul, MN. He served there from July 1946 to November 1959, when he moved to Milwaukee to serve as the first full-time president of the Wisconsin Synod.

On 5 September 1936, Naumann married Miss Dorothy Schwarz of LaCrosse, Wisconsin. Dorothy was a 1929 graduate of Dr. Martin Luther College. She served as a teacher at St. John's in Wauwatosa, WI, St. John's in St. Paul, MN and at Mt. Lebanon in Milwaukee, WI. The Lord blessed the couple with seven children: one daughter—Myrna and six sons—Philip, Thomas, Martin, Peter, James and Paul. Dorothy was called home to the church triumphant in October 1975.

During his ministry, in addition to serving a large congregation, Naumann served as Minnesota District President from 1948 to 1953. He also served the Evangelical Lutheran Joint Synod of Wisconsin and other States as second vice-president from 1951 to 1953. When John Brenner declined to stand for reelection in 1953, Naumann was elected as president of the Synod. He served as both president and full-time pastor of St. John's until 1959, when he became the full-time president of the Wisconsin Synod. He served in that capacity until his death in 1979. He was re-elected to an unprecedented 13 consecutive two-year terms. During his presidency, he served the Wisconsin Synod as an advisor on a number of boards including the Committee on Doctrinal Matters, the Committee on Inter-Church Relations, the Publications Committee and others. During his presidency, the Synod expanded from having congregations in 16 states to 48 states. It also began world mission movements in Malawi, Cameroon, Puerto Rico, Antigua, Mexico, Colombia, Japan, Taiwan, Hong Kong, Indonesia and India.

Naumann intended to retire after his term ended in 1979 due to health reasons, but the Lord had other plans. On 16 June 1979, he suffered a massive stroke and was rushed to the hospital in a coma. Early on the morning of 19 June 1979, Oscar John Naumann was called from this veil of tears to join his Savior in the eternal rest at the age of 69. His funeral service was held on 21 June 1979 at Mt. Lebanon,

Milwaukee. Rev. Marvin Otterstatter, Naumann's pastor at Mt. Lebanon, preached the funeral sermon on Psalm 73:25-26—Naumann's Confirmation verse. Rev. George Boldt, the acting first vice president of the WELS, served as presiding minister. Acting President Carl Mischke addressed the gathering on behalf of the Synod. A large chorus of pastors and teachers sang three special numbers. Pastors Norman Berg, Theodore Sauer, James Schaefer, Robert Voss and Professors Carl Lawrenz and Oscar Siegler served as pallbearers. The district presidents of the Synod served as honorary pallbearers. His interment took place at Graceland Cemetery in Milwaukee that day, where Rev. Otterstatter read the committal service.

At the time of Naumann's death, acting President Carl Mischke said, "[Under Naumann's presidency the Synod had expanded] from a Midwestern church body to a national church body with congregations in most of the 50 states and mission fields in twelve countries....He was unwavering in his determination to keep the Synod faithful to the Word of God and the Lutheran Confessions, but as unwaveringly dedicated to sharing the Word with the world. Our missions have lost a warm friend and an ardent supporter."

ELS President Wilhelm Petersen wrote, "He was indeed a common man who could effectively communicate with people from all walks of life. He was a Christian gentleman, kind, considerate, thoughtful. He was a balanced theologian, truly motivated by the Gospel and evangelical in his approach to the Lord's word. He was aware of the twin dangers of liberalism and legalism which pose a constant threat to the church and he resisted both with the Sword of the Spirit. The Wisconsin Synod has lost an able leader; the ELS has lost a good friend. We shall not soon forget his kind words of encouragement and his gentle, brotherly admonitions. He truly endeavored to keep the unity of the Spirit in the bond of peace."

Morton Schroeder in a March 1997 *Northwestern Lutheran* article wrote, "Although turbulence marked the early years of Naumann's presidency, his messages to the faithful encouraged patience. All points, he held, must be heard, discussed, evaluated. Conveyed in formal reports, sermons, and articles in (the *Northwestern Lutheran*), they were upbeat and optimistic. Three themes, not unlike litanies, were repeated again and again: faithfulness to the apostles' doctrine, interest in mission work, and increased consecration in the stewardship of money."

Custodial history:

The collection was originally held during Naumann's life in the Office of the President located from 1953-1959 at his home in St. Paul, MN. When Naumann became the full-time President of the Wisconsin Synod, the Office of the President was moved to a new Synod headquarters at 3512 W. North Ave., Milwaukee, WI. At the time of his death in June 1979, this collection of presidential papers was moved to the Synod Archives stored in the basement of the Wisconsin Synod building (3512 W. North Ave., Milwaukee). With the move of Synod administration from North Ave. to 2929 Mayfair Rd. in Milwaukee in 1983-84 and the move of the Archives to Wisconsin Lutheran Seminary, the Naumann collection was permanently moved to the WELS Archives, Mequon, WI. In October 2004, the WELS Office of the President donated three more boxes of correspondence, reports and other materials produced and received by Naumann during a project to digitize the files of that Office. These three boxes of materials have been included in the Naumann collection.

Scope and Content:

The collection is made up of materials created by and collected by Rev. Oscar J. Naumann. The collection reflects the life of an active man involved in leading a small, conservative Lutheran synod based in Milwaukee, WI through the storms of doctrinal conflict to a period of unprecedented growth in souls and mission efforts at home and abroad, while at the same time maintaining a solid,

confessional stance based solely on the Word of God. Many of the items in the collection reflect the evangelistic and pastoral nature of a strong, yet humble, leader in the establishment and growth of the WELS as a Scripturally-pure, confessional Lutheran church body during a time of ecumenism, compromise and social gospel among other Lutheran church bodies. Many of these items also reflect his strong leadership amidst the doctrinal crises that arose in the 1950s and 1960s between the Wisconsin Synod and the Lutheran Church-Missouri Synod and amidst the time of growth and expansion that took place in the Wisconsin Synod after the split in 1961.

The collection consists of the following series:

Series 1: Case files of pastors, laypeople and congregations

Series 2: Church of the Lutheran Confession documents

Series 3: Federation for Authentic Lutheranism documents

Series 4: General correspondence

Series 5: Correspondence and documents on inter-church relations

Subseries 1: Commission on Inter-Church Relations – 1966-79

Subseries 2: Commission on Doctrinal Matters – 1948-68

Series 6: Domestic and foreign Lutheran church bodies

Subseries 1: Church of the Evangelical Lutheran Confession in the Dispersion – 1952-59

Subseries 2: German Free Churches – 1968-72

Subseries 3: Slovak Evangelical Lutheran Church/Synod of Evangelical Lutheran Churches (SELC) – 1953-68

Subseries 4: *Selbstständige Evangelische Lutherische Kirche* – 1968-73

Series 7: Lutheran Church-Missouri Synod (LC-MS) documents

Subseries 1: WELS/LC-MS Correspondence – 1951-75

Series 8: Documents on Lutheran organizations

Series 9: Newspaper clippings

Series 10: Documents on non-Lutheran organizations

Subseries 1: American Bible Society – 1956-73

Series 11: Correspondence and documents on parish events

Series 12: Preaching invitations

Series 13: Specific correspondence

Series 14: Correspondence and documents on synodical affairs

Subseries 1: Northwestern Publishing House – 1960-70

Subseries 2: Synodical committees – 1954-70

Subseries 3: Synodical publications – 1954-73

Series 15: Synodical Conference documents

Subseries 1: Official documents 1954-65

Subseries 2: Synodical Conference Missionary Board – 1953-63

Series 16: Correspondence and documents on topical issues

Source of supplied title: Title based on the provenance of the records.

Arrangement: See appendix A for arrangement of the folders in the boxes.

Restrictions: None.

Accruals: As of 1 November 2004, there is the possibility of further additions to the collection from the files of the Office of the President located at WELS Synod Administration Building, 2929 Mayfair Rd. Milwaukee, WI.

Series level description

The Oscar J. Naumann Papers

Series 1: Case files of pastors, laypeople and congregations

Dates: 1945-1974

Extent: 24 folders, 18.9 cm. of textual records

Scope and Content: This series consists of correspondence from 24 cases that came to Naumann's attention during his ministry and presidencies. Included are: Richard Buege Case (1958-59); Harvey Callies Case (1962-72); Arthur Clement Case (1962-70); Ralph Gehrke Case (1958-61); Ernest Gerds Case (1951-60); Grace Lutheran Church & Hope Lutheran Church, Warren, AZ Case (1957-58); Paul Koch Case (1955); Kral Family Case (1959); Ernst Kuehl Case (1961-62); Herbert Kuske Case (1958-60); Francis Machina Case (1963-66); Julius Manteufel Case (1971-74); Dieter Mueller Case (1966-69); Hector Pachero Case (1972-73); John Pekrul Case (1960-65); Wayne Popp Case (1972); Edmund Reim Case (1951-58); St. John's Lutheran Church, Lake City, MN Case (1945-49); St. Martin's Lutheran Church, Winona, MN Case (1960-61); Egbert Schaller Case (1955-58); Herold Schulz Case (1962-68); *Sola Scriptura* Case (1971); Termination of Fellowship Case (Otto Abrams, E.C. Hallstein, and Elmer Mehlberg) (1953-54) and Zion Lutheran Church, Toledo, OH Case (1954-56).

Series 2: Church of the Lutheran Confession documents

Dates: 1960-1969

Extent: 4 folders, 4.7 cm. of textual records

Scope and Content: This series consists of correspondence to and from members of the CLC during Naumann's presidency, newspaper clippings, doctrinal papers, official documents and resolutions. Some documents reflect the tension between CLC & WELS during the time shortly after the split in 1959.

Series 3: Federation for Authentic Lutheranism documents

Dates: 1968-1977

Extent: 10 folders, 12 cm. of textual records

Scope and Content: This series consists of all materials from the FAL Synodical conventions during this time, FAL correspondence to and from Naumann, and any official documents of the FAL. These documents reflect the transition that FAL made from LC-MS into an independent church body and eventually into membership in the WELS.

Series 4: General correspondence

Dates: 1949-1979

Extent: 61 folders, 110.6 cm. of textual records

Scope and Content: This series consists of correspondence from a large number of correspondents on a variety of topics. This series was received organized by first letter of the last name. Some correspondents included are: Theodore A. Aaberg, Bruce W. Adams, Paul G. Albrecht, Albert L. Althoff, Julian G. Anderson, Wilma J. Auer, Mark F. Bartling, Walter F. Beckmann, Daniel M. Deutschlander, Roger P. Drews, George Enderle, Harold A. Essmann, Werner H. Franzmann, Immanuel P. Frey, E.R. Gamm, Karl A. Gurgel, Roland H. Hoenecke, Herbert Jaster, Werner P. John, Richard P. Jungkuntz, James Kiecker, Henry A. Koch, E.E. Kowalke, William Krueger, Keith C. Kruck, Max

Lehninger, Edward W. Lindemann, Francis Machina, Theodore Maehr, William Maurer, John Meyer, Louis Meyer, William Morgan, H.C. Nitz, Marcus Nitz, Robert Neumann, L.W. Newman, Carl Nommenson, Carl A.N. Olson, Edith Olson, Paul Otten, Roman J. Palmer, Art Pankow, David Plocher, Gerhard L. Press, Robert Reim, Herbert Schaeffer, William J. Schaeffer, Loren Schaller, George Schweikert, E.A. Sitz, J.M. Skaates, Ernest Sprengeler, R.W. Steffenhagen, John J. Sullivan, Wayne TenBroek, W.F. Vathauer, and Kenneth W. Vertz, as well as a large number of other correspondents.

Series 5: Correspondence and documents on inter-church relations

Dates: 1948-1979

Extent: 16 folders, 27.5 cm. of textual records

Scope and Content: This series consists of documents and correspondence from Naumann's involvement on the Commission on Inter-Church Relations, as well as earlier documents from free conferences, Conclaves of Theologians, and Commission on Doctrinal Matters. Subseries 2 contains information on the Advisory Committee, Oberursel Discussions, and Leipzig Seminary Case.

Subseries 1: Commission on Inter-Church Relations—1966-1979

Subseries 2: Commission on Doctrinal Matters—1948-1968

Series 6: Domestic and foreign Lutheran church bodies

Dates: 1950-1978

Extent: 23 folders, 32 cm. of textual records

Scope and Content: This series consist of correspondence, reports and other documents dealing with the Wisconsin Synod's dealings with various Lutheran church bodies, both domestic and foreign, including: American Lutheran Church, Evangelical Lutheran Church of Australia, Evangelical Lutheran Church of Brazil, Evangelical Lutheran Church of England, Free Evangelical Lutheran Church of Finland, *Freie Evangelische Lutherische Synode in Südafrika*, Lutheran Church—Australia, Lutheran Church—Canada, Lutheran Churches of the Reformation, Lutheran World Federation, Orthodox Lutheran Conference, Polish Lutheran Church in Exile, and *Tagung Freier Evangelisch Lutherischer Kirchen in Deutschland und Südafrika*.

Subseries 1: Church of the Evangelical Lutheran Confession in the Dispersion—1952-59

Subseries 2: German Free Churches—1968-72

Subseries 3: Slovak Evangelical Lutheran Church/Synod of Evangelical Lutheran Churches—1953-68

Subseries 4: *Selbstständige Evangelische Lutherische Kirche*—1968-73

Series 7: Lutheran Church-Missouri Synod documents

Dates: 1951-1975

Extent: 23 folders, 22.8 cm. of textual records

Scope and Content: This series consists of correspondence, newspaper clippings and other documents dealing with the Wisconsin Synod's tenuous relationship with LC-MS immediately before, during and after the 1961 split in fellowship. These documents reflect the attitudes and controversy that came to bear as the Wisconsin Synod considered and finally broke fellowship ties with LC-MS. This series includes documents from presidents' meetings, individual meetings between Naumann and Oliver Harms, and discussions on the state of the church. Subseries 1 contains correspondence dealing with LC-MS/WELS relations to and from Naumann from various LC-MS and WELS correspondents, including Christopher Albrecht, Paul G. Albrecht, Albert L. Althoff, Siegbert W. Becker, John W.

Behnken, Karl A. Gurgel, K.F. Koeplin, Walter Moll, Carl Nommenson, Carl Rusch, H.W. Romoser and a number of other correspondents. The correspondence was found arranged alphabetically.

Subseries 1: LC-MS Correspondence—1951-1975

Series 8: Documents on Lutheran organizations

Dates: 1954-1978

Extent: 11 folders, 16.5 cm. of textual records

Scope and Content: This series consists of correspondence and documents from a variety of pan-Lutheran organizations, including Aid Association for Lutherans, Bethesda Lutheran Home, Citizens for Lutheran Re-Education, Foundation for Reformation Research, Lutheran Bible Translators, Inc., Lutheran Home for the Aged, Lutheran Men in America, Lutheran Society for Music, Worship & the Arts, and the National Lutheran Council

Series 9: Newspaper clippings

Dates: 1961-1978

Extent: 2 folders, 2 cm. of textual records

Scope and Content: This series consists of newspaper clippings from a variety of newspapers on a wide variety of topics.

Series 10: Documents on non-Lutheran organizations

Dates: 1956-1975

Extent: 12 folders, 13.5 cm. of textual records

Scope and Content: This series consists of correspondence and documents from a variety of Christian organizations, including American Bible Society, Bible Science Association, Church Mutual, Creation Science Research Center, International of Christian Churches, Lord's Day Alliance of the USA, National Council of Churches of Christ of USA and Tyndale House Publishers.

Subseries 1: American Bible Society—1956-1973

Series 11: Correspondence and documents on parish events

Dates: 1955-1974

Extent: 5 folders, 10.5 cm. of textual records

Scope and Content: This series consists of invitations sent to Naumann for various WELS local parish events, including church dedications, school dedications, church anniversaries, ministry anniversaries and other events.

Series 12: Preaching Invitations

Dates: 1960-1975

Extent: 7 folders, 14 cm. of textual records

Scope and Content: This series consists of preaching invitations, both accepted and declined, extended to Naumann during his presidency.

Series 13: Specific Correspondence

Dates: 1954-1977

Extent: 22 folders, 17.5 cm. of textual records

Scope and Content: This series consists of correspondence from a number of specific correspondents on a variety of topics. This series was found organized by first letter of the last name. The correspondents

included are: Theodore A. Aaberg, Otto H.J. Brauer, Paul H. Burgdorf, Mrs. Eugene J. Cramer, Theodore Dierks, Otto J. Eckert, J.H. Gockel, Tom Hardt, David Hassold, H.A. Koch, Karl F. Krauss, A.T. Kretzmann, P.E. Kretzmann, John O. Lang, Marjorie K. Lawrence, John Maxwell, Hermann Otten, W.M. Oesch, E. Schaller, Herbert J. Witt, and M.J. Witt. Also includes correspondence regarding the death of J.P. Meyer.

Series 14: Correspondence and documents on synodical affairs

Dates: 1954-1978

Extent: 21 folders, 24.5 cm. of textual records

Scope and Content: This series consists of documents relating to the internal affairs of the Wisconsin Evangelical Lutheran Synod. Included are letters regarding appointments and resignations, material from Northwestern Publishing House, information on the Visiting Elders Program, material from various committees (including the Audio-Visual Aids, Blue Ribbon, Compensation for Congregations, Constitutional Matters, and Publications Committees), official synodical publications including (*Gemeindeblatt*, *Junior Northwestern*, and *Northwestern Lutheran*), world missions information (especially related to African missions), and other miscellaneous synodical information and material.

Subseries 1: Northwestern Publishing House—1960-1970

Subseries 2: Synodical Committees—1954-1970

Subseries 3: Synodical Publications—1954-1973

Series 15: Synodical Conference documents

Dates: 1953-1965

Extent: 15 folders, 17 cm. of textual records

Scope and Content: This series consists of correspondence, reports, and other documents relating to the activity of the Synodical Conference, of which the Wisconsin Evangelical Lutheran Synod was a member until it severed fellowship in 1963. These documents reflect the tenuous nature of the synods which comprised the Synodical Conference during Naumann's presidency.

Subseries 1: Official Documents (including minutes, reports, and official correspondence)—
1954-1965

Subseries 2: Synodical Conference Missionary Board (including minutes, correspondence, and information on the Nigerian, Jamaican, and Negro missions)—1953-1963

Series 16: Correspondence and documents on topical issues

Dates: 1953-1976

Extent: 14 folders, 19 cm. of textual records

Scope and Content: This series consists of documents and correspondence relating to specific topics dealt with during Naumann's presidency. Included are: Bible Translations, Boy Scouts, Education, Equal Pay Act, Federal Aid, Glossolalia, Lodges, Michigan Teacher Certification, Role of Women in the Church, Selective Service, Vietnam, and Worship.

Appendix A

The Oscar J. Naumann Papers

Arrangement

Box 1: Folders 1-40
Box 2: Folders 41-58
Box 3: Folders 59-78
Box 4: Folders 79-106
Box 5: Folders 107-130
Box 6: Folders 131-162
Box 7: Folders 163-191
Box 8: Folders 192-228
Box 9: Folders 229-264
Box 10: Folders 265-270

Series 1: Case files of pastors, laypeople and congregations
Folders 1-24

Series 2: Church of the Lutheran Confession documents
Folders 25-28

Series 3: Federation for Authentic Lutheranism documents
Folders 29-38

Series 4: General correspondence
Folders 39-99

Series 5: Correspondence and documents on inter-church relations
Folders 100-115
Subseries 1: Commission on Inter-Church Relations—1966-1979
Folders 100-106
Subseries 2: Commission on Doctrinal Matters—1948-1968
Folders 110-115

Series 6: Domestic and foreign Lutheran church bodies
Folders 116-138
Subseries 1: Church of the Evangelical Lutheran Confession in the Dispersion—1952-59
Folders 129-130
Subseries 2: German Free Churches—1968-72
Folders 131-132
Subseries 3: Slovak Evangelical Lutheran Church/Synod of Evangelical Lutheran Churches—
1953-68
Folders 133-136
Subseries 4: Selbstständige Evangelische Lutherische Kirche—1968-73
Folders 137-138

Series 7: Lutheran Church-Missouri Synod documents
Folders 139-161

Subseries 1: LC-MS/WELS Correspondence – 1951-1975
Folders 146-161

Series 8: Lutheran organizations documents
Folders 162-172

Series 9: Newspaper clippings
Folders 173-174

Series 10: Non-Lutheran organizations documents
Folders 175-186
Subseries 1: American Bible Society—1956-1973
Folders 175-179

Series 11: Parish Events
Folders 187-191

Series 12: Preaching Invitations
Folders 192-198

Series 13: Specific Correspondence
Folders 199-220

Series 14: Synodical Affairs
Folders 221-241
Subseries 1: Northwestern Publishing House—1960-1970
Folders 222-224
Subseries 2: Synodical committees—1954-1970
Folders 225-229
Subseries 3: Synodical publications—1954-1973
Folders 230-235

Series 15: Synodical Conference
Folder 242-256
Subseries 1: Official Documents—1954-1965
Folders 242-256
Subseries 2: Synodical Conference Missionary Board—1953-1963
Folders 247-256

Series 16: Topical Issues
Folder 257-270